

Medtronic

Engineering the extraordinary

TruClear™ System

A clear advantage[†]
in uterine tissue removal



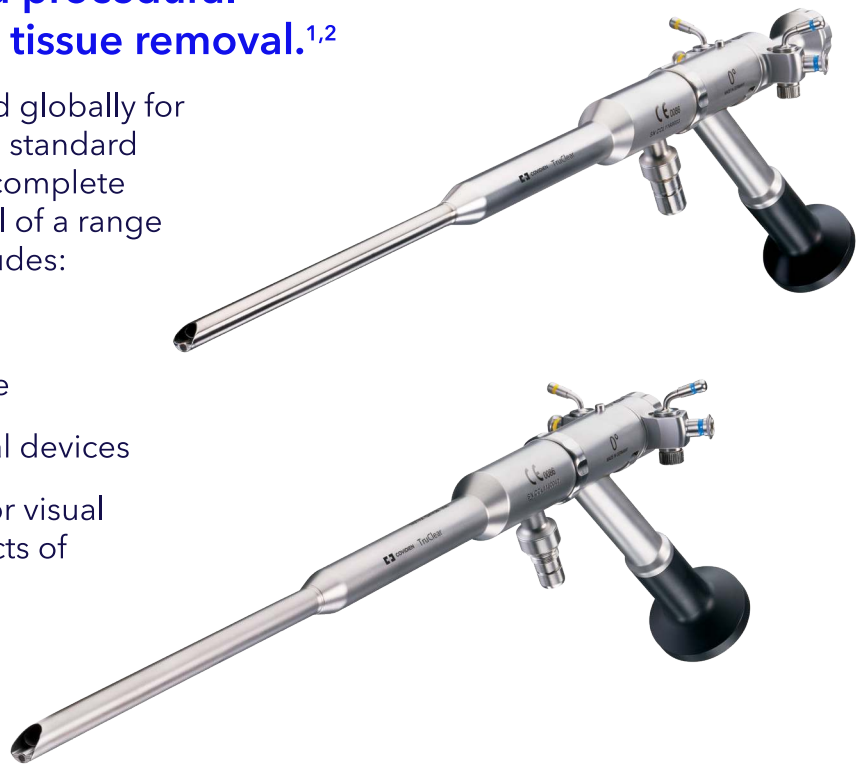
TruClear™ Elite hysteroscopes

Bring clarity, precision, and procedural efficiency to hysteroscopic tissue removal.^{1,2}

The TruClear™ system has been used globally for more than a decade and has set the standard in quality tissue removal. It offers a complete technology platform for the removal of a range of intrauterine abnormalities. It includes:

- Advanced fluid management
- Efficient cut and capture of tissue
- Pathology-specific tissue removal devices

The TruClear™ system is designed for visual D&C, evacuation of retained products of conception (RPOC), and fibroid and polyp removal.



TruClear™ Hysteroscopic Tissue Removal System

Designed for performance⁴

Clear Operative Field^{1,2}

The TruClear™ system:

- Reduces tissue floating within the uterine cavity
- Helps maintain a clear operative field with continuous flow and suction

Efficient Procedure^{1,2}

The TruClear™ system:

- Delivers simultaneous cutting and tissue removal, requiring only a single insertion

Targeted Pathology Removal

The TruClear™ system:

- Allows for efficient cut and capture with continuous visualisation
- Enables evaluation of the entire pathology due to tissue capture

Gentle Resection

The TruClear™ system:

- Preserves the uterus through localised treatment while removing tissue
- Reduces the risk of energy discharge-induced scarring and gas embolism due to mechanical design⁴
- Reduces fluid use through proprietary suction control technology



Multiple procedures, one high-performance system.

The TruClear™ system enables more efficient procedures and enhanced performance for a full spectrum of conditions. Here are some examples.^{1,2,3}



Myomectomy

The TruClear™ system:

- Brings speed, efficiency, and precision to the removal of myomas¹
- Reduces the risk of fluid overload³

Hysteroscopic Adhesiolysis

- Removes intrauterine adhesions under direct visualisation
- Designed to reduce damage to surrounding healthy endometrium

Polypectomy

The TruClear™ system:

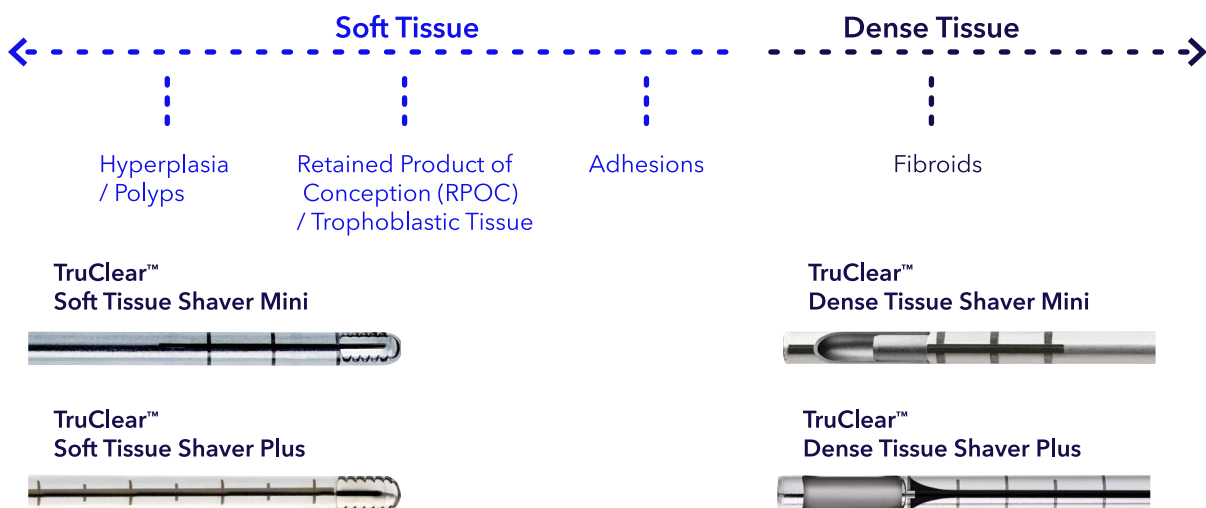
- Improves the efficiency of polyp removal by reducing polypectomy procedure time by half that of electrical resection as demonstrated in a clinical study¹
- Is likely to completely remove polyps compared to electrical resection as found in one study²
- Has demonstrated increased procedural comfort for patients compared with electrical resection²

Retained Products of Conception Evacuation

The TruClear™ system:

- Minimises endometrial damage by evacuating RPOC under direct visualisation
- Captures tissue for histological confirmation
- Potentially reduces the need for additional procedures as the system has demonstrated complete removal in over 94% of patients⁵

Two types of tissue removal devices **enhanced** for different pathology



More options[¥] means more control in procedures



The TruClear™ system is a complete technology platform for hysteroscopy procedures. It brings together high-performance scopes – like TruClear™ Elite hysteroscopes – and incisionless tissue removal with advanced fluid management. Together, they are designed to deliver access & clarity so you can do what you do best: treat patients.

See and Treat Methodology

TruClear™ hysteroscopes offer a clear view of the uterine cavity and a large working channel. So you can treat uterine conditions at the same time as diagnosis.⁴

TruClear™ Elite hysteroscopes deliver next-generation features to enhance your technique – and the patient experience.²

In your office or in theatre, you can have a hysteroscope that provides:

- High-definition images
- Continuous inflow and outflow with suction
- A long working channel for access to the entire uterus – including the cornua and fundal wall
- An improved seal to minimise leakage*



TruClear™ Elite
Hysteroscope Mini



TruClear™ Elite
Hysteroscope Plus

Meanwhile, your patients will appreciate refinements such as:

- A single-insertion instrument that enables fewer procedural steps vs electrical resection
- An angled tip for easier insertion into the cervical canal and uterus

TruClear™ tissue shaver devices deliver:

- Simultaneous tissue cutting and aspiration to reduce procedure time
- Proprietary suction control feature to reduce fluid loss
- A choice of four pathology-enhanced disposable devices
 - TruClear™ soft tissue shaver mini
 - TruClear™ soft tissue shaver plus
 - TruClear™ dense tissue shaver mini
 - TruClear™ dense tissue shaver plus

TruClear™ soft
tissue shaver mini



TruClear™ soft
tissue shaver plus



TruClear™ dense
tissue shaver mini



TruClear™ dense
tissue shaver plus



* Compared to legacy TruClear™ hysteroscopes. ¥ Vs legacy TruClear™ hysteroscopes

A simpler, more efficient fluid management system.[^]

The HysteroLux™ system is a next generation solution for your hysteroscopic procedures. It offers a touchscreen interface, user-friendly operation settings, and rapid response to changes in uterine pressure.

Enhanced distention

The HysteroLux™ system:

- Delivers a high maximum flow rate of 800 mL per minute
- Provides a rapid response to changes in intrauterine pressure
- Has a high maximum pressure setting of 150 mm Hg

Enhanced safety

The HysteroLux™ system:

- Enables continuous, real-time monitoring of fluid deficit when its scale is in use
- Reduces the risk of fluid overload by continuously monitoring fluid volume deficit with ± 6 percent accuracy³
- Indicates critical deficit levels, pressure levels, and deficit changes with an audible alarm

Simplicity and flexibility

The HysteroLux™ system provides:

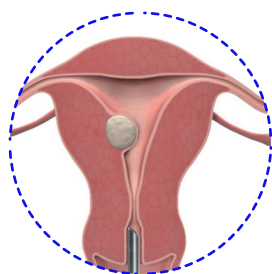
- A user-friendly touchscreen that simplifies setup
- Integrated suction
- Fewer connections and canisters[^]
- Compatibility with a variety of diagnostic and operative hysteroscopes and resectoscopes to enable more procedural flexibility



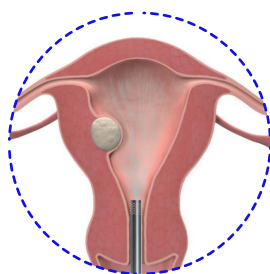
HysteroLux™
Fluid Management System

Simple hysteroscopic tissue removal

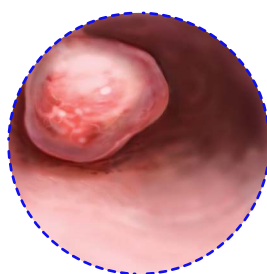
The TruClear™ system uses a tissue shaver device that is inserted through a hysteroscope to simultaneously cut and aspirate tissue.



Insert the hysteroscope into the uterus



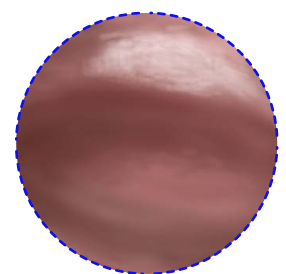
Distend the uterus with saline



Locate intrauterine abnormality



Place shaver against the pathology – the TruClear™ device will simultaneously aspirate and cut tissue



Remove the shaver and hysteroscope from the uterus

[^] Compared to our legacy fluid management system.

Get a clear advantage in your procedures

To learn more about the TruClear™ system, contact your local Medtronic sales representative.

Code	Product Description	Qty
Hardware Products		
TruClear™ Hysteroscopic Tissue Removal System		
7209808	TruClear™ Control Unit	1 each
7209820	TruClear™ Footswitch	1 each
7209807	TruClear™ Handpiece	1 each
TruClear™ Hysteroscopes		
72204878	TruClear™ Elite Hysteroscope Mini	1 each
72204879	TruClear™ Elite Hysteroscope Plus	1 each
HysteroLux™ Fluid Management System		
72205000	Fluid Management System, Control Unit	1 each
72205001	Fluid Management System, Scale	1 each
72205041	Vacuum Regulator	1 each
Disposable Products		
Tissue Shaver Devices		
72203012	TruClear™ Dense Tissue Shaver Plus	1 each
72204064	TruClear™ Dense Tissue Shaver Mini	1 each
7209509	TruClear™ Soft Tissue Shaver Plus	1 each
72202536	TruClear™ Soft Tissue Shaver Mini	1 each
Fluid Management Disposables		
72205015	Hysteroscopic Procedure Kit	1 each
72205027	HysteroLux™ Vacuum Tube Set	Box of 10
72205028	HysteroLux™ Inflow Tube Set	Box of 10
7209823	HysteroLux™ Outflow Tube Set	Box of 5
7209824	Suction Canister Accessory Kit	1 each
72200024	3000 cc Hi-Flow Canisters	Box of 36
Other		
72203004	Gynaecology Instrument Tray	1 each
72205051	TruClear™ Elite Hysteroscope Seals	Box of 5

This guide is not intended to replace the Instructions for Use. Please refer to the Instructions for Use for a complete list of indications, contraindications, warnings, precautions, and other important medical information. Always read and follow the Instructions for Use.

©2022 Medtronic. Medtronic, Medtronic logo, and Engineering the extraordinary are trademarks of Medtronic. ™*Third-party brands are trademarks of their respective owners. All other brands are trademarks of a Medtronic company.

Medtronic

India Medtronic Pvt. Ltd.
1261, Solitaire Corporate Park
Building No. 12, 6th Floor
Andheri - Ghatkopar Link Road
Andheri (E), Mumbai-400 093
rs.indiainsidesales@medtronic.com

medtronic.co.in

Call us for more
information



medtronic.com/truclear

References

- † Vs electrical resection & conventional resectoscopy. ‡ Vs legacy TruClear™ hysteroscope
1. Emanuel MH, Womstaker K. A new hysteroscopic operating technique to remove intrauterine polyps and myomas. J Minim Invasive Gynecol. 2005; 12(1):62-66.
 2. Smith PP, Middleton LJ, Connor M, Clark TJ. Hysteroscopic morcellation compared with electrical resection of endometrial polyps. Obstet Gynecol. 2014;123(4):745-751. doi: 10.1097/AOG.0000000000000187
 3. HysteroLux™ Fluid Management System Instructions for Use. New Haven, CT: Medtronic; 2017.
 4. TruClear™ operative hysteroscopes IFU.
 5. Hooker A, Aydin H, Brohlmann H, and Huirne J. Long-term complications and reproductive outcome after the management of retained products of conception: a systematic review. Fertil Steril. 2016;105(1):156-164.